

BANYAN TREE ESTATES

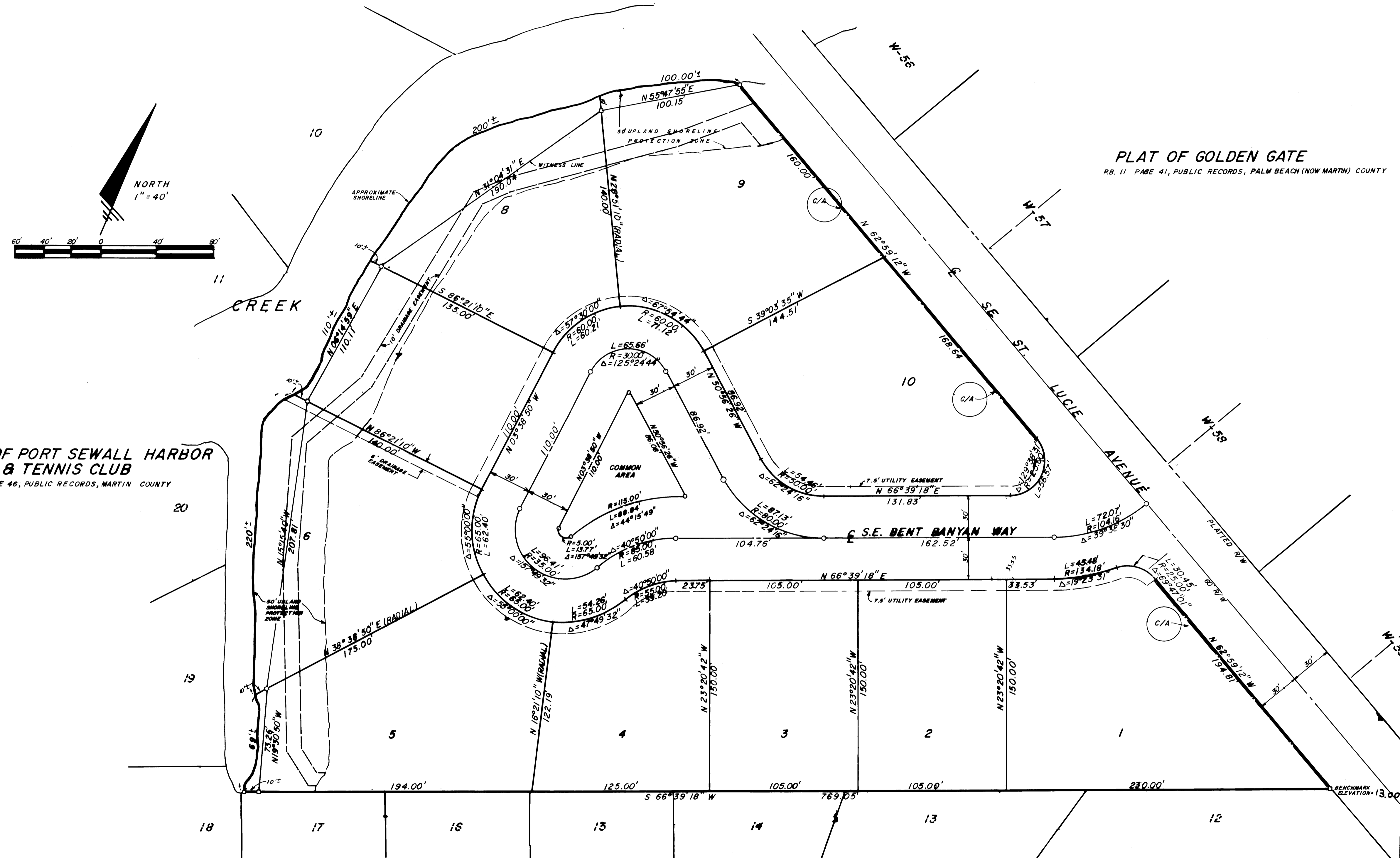
A REPLAT OF PORTIONS OF BLOCKS
122, 124, AND 126 GOLDEN GATE SUBDIVISION
AS RECORDED IN PLAT 11 PAGE 41
PALM BEACH (NOW MARTIN) COUNTY, FLA.

CLERK'S RECORDING CERTIFICATE
I, MARSHA STILLER, CLERK OF THE CIRCUIT COURT OF MARTIN COUNTY, FLORIDA DO HEREBY CERTIFY THAT THIS PLAT WAS FILED FOR RECORD IN PLAT BOOK 12, PAGE 27, MARTIN COUNTY, FLORIDA, PUBLIC RECORDS THIS DAY OF 1989.

MARSHA STILLER, CLERK OF CIRCUIT COURT OF MARTIN COUNTY, FLORIDA.

FILE NO. _____ BY _____ DEPUTY CLERK (CIRCUIT COURT SEAL)

SUBDIVISION PARCEL CONTROL NUMBER _____



PLAT OF PORT SEWALL HARBOR & TENNIS CLUB
P.B. 6 PAGE 46, PUBLIC RECORDS, MARTIN COUNTY

PLAT OF GOLDEN GATE
P.B. 11 PAGE 41, PUBLIC RECORDS, PALM BEACH (NOW MARTIN) COUNTY

PLAT OF PORT SEWALL HARBOR & TENNIS CLUB
P.B. 6 PAGE 46, PUBLIC RECORDS, MARTIN COUNTY

PREPARED JUNE, 1989	
BY	
Q	QUILLEN - VELASCO ENGINEERS & SURVEYORS
1536-E S.E. VILLAGE GREEN DRIVE	PORT ST. LUCIE, FLORIDA
3880 338-4466, 879-8477	
SHEET 2 OF 2	2